

THIS PLAT IS IN ACCORD AND WAS ADJUSTED BY THE LEAST SQUARE METHOD TO THE TRIANGULAR CLOSURE AND HAS BEEN FOUND TO HAVE A PRECISION OF CLOSURE IN EXCESS OF 1" IN 100,000. NO STATE PLANE COORDINATE MONUMENT WAS FOUND WITHIN 500' OF THIS PROPERTY.

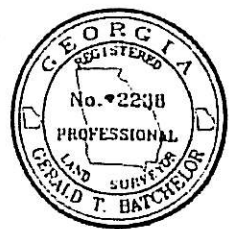
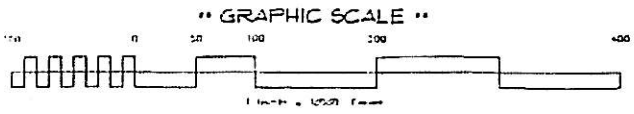
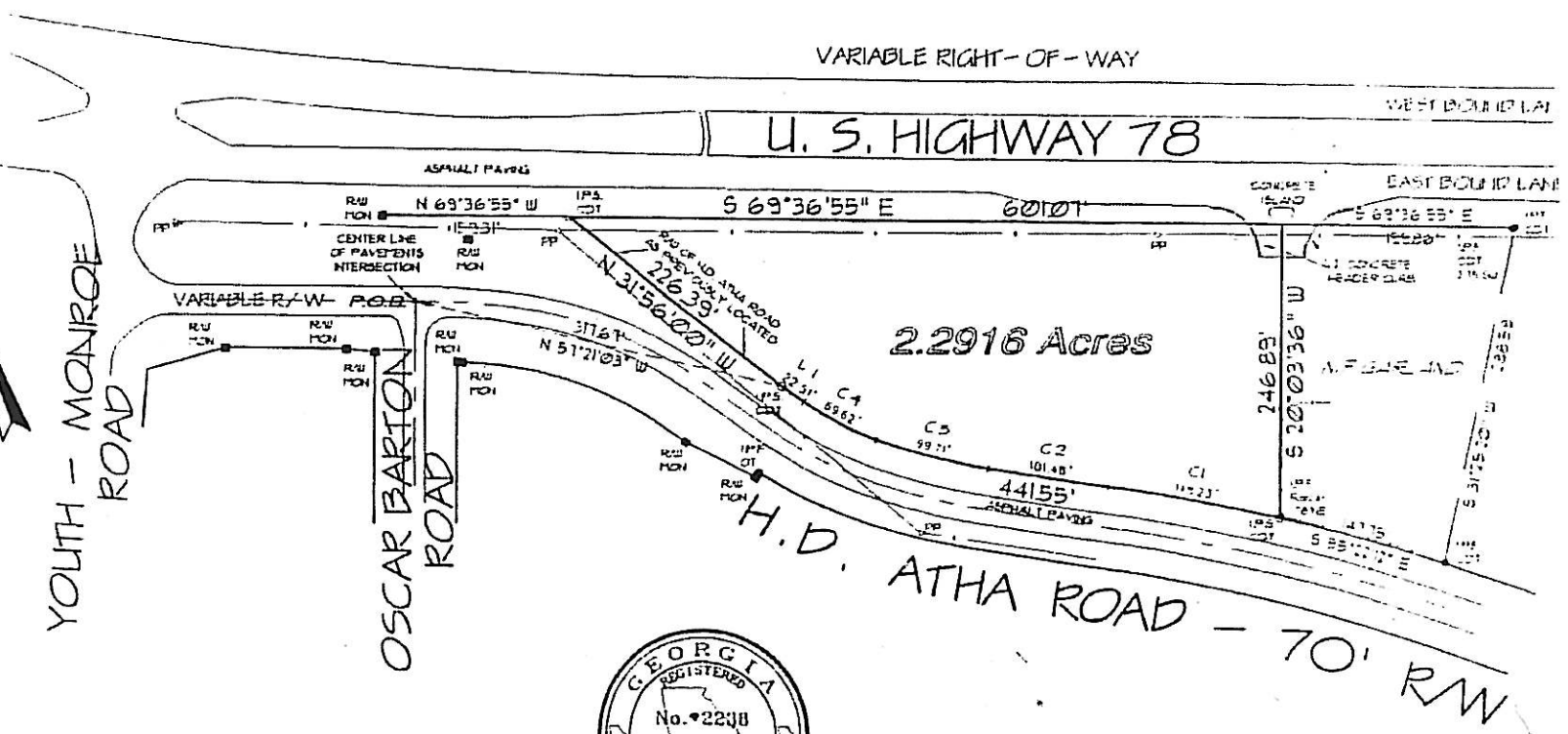
RIGHT-OF-WAYS ARE BASED ON CENTERLINES OF EXISTING PATHS OF TRAVEL UNLESS NOTED OTHERWISE. ALL MATTERS PERTAINING TO TITLE ARE EXCEPTED. THIS PLAT WAS PREPARED FOR THE EXCLUSIVE USE OF THE PERSON, PERSONS, OR ENTITY NAMED HEREON. THIS PLAT DOES NOT EXTEND TO ANY UNNAMED PERSON, PERSONS, OR ENTITY WITHOUT EXPRESS RECERTIFICATION BY THE SURVEYOR NAMING SAID PERSON, PERSONS, OR ENTITY.

C1	1805.12'	148.53'	148.14'	11.14' 12.1'
C2	5022.64'	101.48'	101.48'	11.61' 23.54'
C3	566.13'	99.71'	99.58'	11.59' 46.26'
C4	245.59'	69.62'	69.34'	11.42' 36.25'

- 1. 1/4" = 100'
- 2. 1/4" = 100'
- 3. 1/4" = 100'
- 4. 1/4" = 100'
- 5. 1/4" = 100'
- 6. 1/4" = 100'
- 7. 1/4" = 100'
- 8. 1/4" = 100'
- 9. 1/4" = 100'
- 10. 1/4" = 100'
- 11. 1/4" = 100'
- 12. 1/4" = 100'
- 13. 1/4" = 100'
- 14. 1/4" = 100'
- 15. 1/4" = 100'
- 16. 1/4" = 100'
- 17. 1/4" = 100'
- 18. 1/4" = 100'
- 19. 1/4" = 100'
- 20. 1/4" = 100'

**** FLOOD STATEMENT ****

I HAVE THIS DATE EXAMINED THE FIA OFFICIAL FLOOD HAZARD MAP AND THE REFERENCED PARCEL IS NOT IN AN AREA HAVING SPECIAL FLOOD HAZARDS. MAP #13297C0100 B - FEB 16 1990



**** REFERENCE ****
 PLAT BOOK 44 PAGE 111